

Parkheath

Sold on Service

Eton Avenue NW3

£3,250 PCM (£750 per week) - Camden Band F



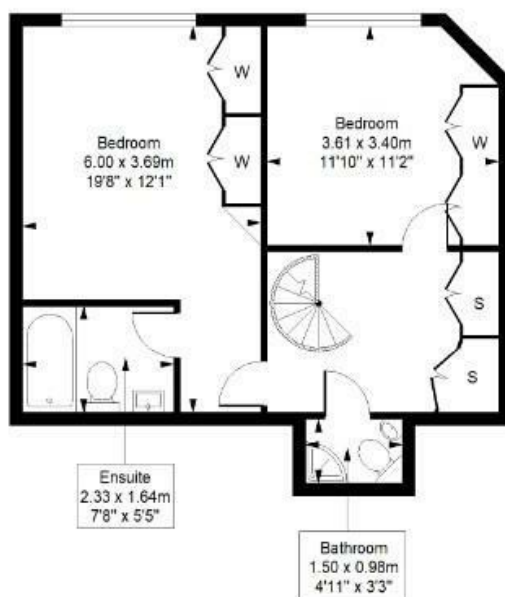
Elegant and spacious 2 bedroom apartment
Private balcony and beautiful communal gardens
Modern Kitchen diner with all appliances
2nd double bedroom
Prestigious tree-lined road

1st & 2nd floor maisonette
Wood floor reception with doors to balcony
Master bedroom with ensuite
Luxurious shower room
Close to Swiss Cottage and Belsize Park tubes

Belsize Park Office 020 7431 3104

Eton Avenue

Approximate Gross Internal Area = 90.0 Sq m / 969 Sq ft



First Floor



Ground Floor

This plan is for layout guidance only. Drawn in accordance with RICS guidelines. Not drawn to scale unless stated. Windows & door openings are approximate. Whilst every care is taken in the preparation of this plan, please check all dimensions, shapes & compass bearings before marking any decisions reliant upon them.

ELLIE CLAIRE PHOTOGRAPHY LTD
www.ellieclairephotography.com

The particulars do not constitute part of an offer or contract. The particulars, including text, photographs and plans, are for the guidance only of prospective purchasers/tenants and must not be relied upon as statements of fact. The descriptions provided therein represent the opinion of the author and whilst given in good faith should not be construed as statements of fact. Nothing in these particulars shall be deemed a statement that the property is in good condition or otherwise or that any services or facilities are in good working order. All measurements are approximate